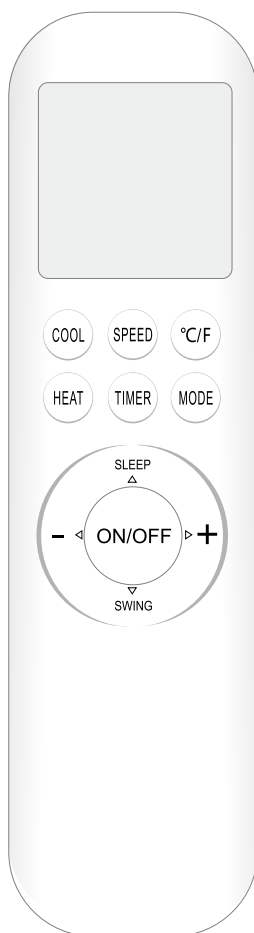


AIR CONDITIONER REMOTE CONTROLLER INSTRUCTIONS



- Carefully read the instructions for safe and correct use of the air conditioner.
- Carefully keep the instructions as it can be referred to at any time.

CONTENTS

Precautions	1
Buttons Description	2
Usage for Mode	4
Auto operation mode	4
Cool/Heat operation mode	4
Fan operation mode	5
Dry operation mode	5
Usage	5
Fix batteries	5

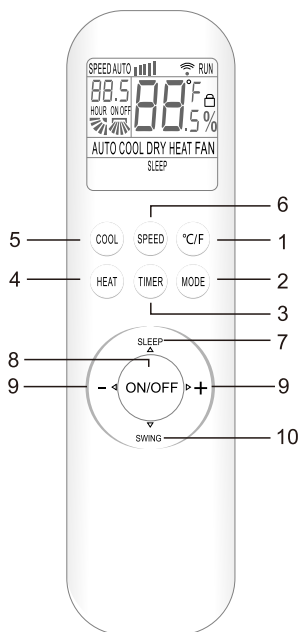
Precautions

- Before first time use of the remote controller, install the batteries and ensure the “+” and “-” poles are correctly positioned.
- Ensure the remote controller is pointed to the signal receiving window and that there is no obstruction between them, the distance is 8m at the maximum.
- Do not let the remote controller drop or fling it at will.
Do not let any liquid in the remote controller.
Do not expose the remote controller directly to the sunlight or excessive heat.
- If the remote controller does not function normally, remove the batteries for 30 seconds before reinstall them. If that doesn't work, replace the batteries.
- When replacing the batteries, do not mix the new batteries with old ones or mix batteries of different types, which could cause failure of the remote controller.
- If the remote controller is not to be used for a long period of time, remove the batteries first, lest the leakage from them may damage the remote controller.
- Properly dispose the discarded batteries.

Note:

- 1. This is an universal remote controller which provide all the function buttons. Please understand that some of the buttons may not function, depending on the specific air conditioner you have purchased. (If a specific function is not available on the air conditioner, pressing the corresponding button will simply have no respond.)**
- 2. HEAT functions are not available for cool only models, thus this button do not work correspondingly.**

Buttons Description



Note:

The remote controller display all symbols during power-on, other time only display symbols corresponding to current operation.

1. °C/F Button

- * The temperature is displayed by default in Celsius.
- * Press the “°C/°F” button, you can set the “°C” or “°F”.
- * The temperature setting range: 16°C (60°F) ~ 32°C(90°F).

Note: Temperature display in Fahrenheit is not available for some models. When temperature is displayed in Fahrenheit on the remote controller, it might be in Celsius on the unit, the function and operation of which will not be affected.

2. MODE Button

- * Press this button, you can select operation mode as follows:

→ AUTO → COOL → DRY → HEAT → FAN →

Note: Heat mode is not available for cool only units.

Please read the Usage for Mode for a detailed description.

Buttons Description

3. TIMER Button

- * With the unit on, press this button to set off timer or with it off to set on timer.
- * Press this button once, the “ON(OFF)” will flash. Press “+” or “-” to set the number of hours in which the unit will be turned on/off, with an interval of 0.5 hour, and a range of 0.5-24 hours.
- * Press it again to confirm the setting, the “ON (OFF)” will stop flashing.
- * If the “TIMER” button is not pressed within 10 seconds after the “ON (OFF)” start flashing, the timer setting will be exited.
- * If a timer setting is confirmed, press this button again will cancel it.

4. HEAT Button

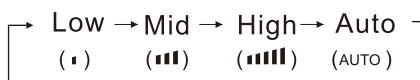
- * Press this button to enter “HEAT” mode.

5. COOL Button

- * Press this button to enter “COOL” mode.

6. SPEED Button

- * Press this button, you can select fan speed as follows:



Note: Auto air speed is not available in fan mode.
This button is invalid in dry mode.

7. SLEEP Button

- * Press this button to enter “SLEEP” mode, which the unit will exit after 10 hours of continuous operation and restore to the previous status.

Note:The sleep function cannot be activated in fan or auto mode.

8. ON/OFF Button

- * Press this button to turn on/off the unit.
- * This will clear the existing timer and sleep settings.

Buttons Description

9. + & - Button


- * Each time the “+” is pressed, the temperature setting will increase by 1°C(1°F) and each time the “-” is pressed, it will decrease by 1°C(1°F).
- * The temperature setting range: 16°C (60°F) ~ 32°C(90°F).

Note: The temperature cannot be set in auto or fan mode.

10. SWING Button

- * Press this button to activate up/down swing and press it again to turn off the swing function.

11. Child-lock

- * Press the “HEAT” and “MODE” buttons at the same time and hold for at least 3 seconds to activate or deactivate the child-lock function.
- * When the child-lock function is activated, the remote control will indicate “”.

Usage for Mode

★ Auto operation mode

1. Press the “ON/OFF” button, the air conditioner starts to operate.
2. Press the “MODE” button, select auto operation mode.
3. By pressing the “SPEED” button, you can select fan speed from Low, Mid, High, Auto.
4. Press the “ON/OFF” button again, the air conditioner stops.

Note: In the auto mode, the temperature settings is non-effective.

★ Cool/Heat operation mode

1. Press the “ON/OFF” button, the air conditioner starts to operate.
2. Press the “MODE” button, select cool or heat operation mode.
3. By pressing the “+” or “-” button, you can set temperature from 16°C (60°F) to 32°C(90°F), the display changes as you press the button.
4. By pressing the “SPEED” button, you can select fan speed from Low, Mid, High, Auto.
5. Press the “ON/OFF” button again, the air conditioner stops.

Note: The cold wind type has no heating function.

Usage for Mode

★ Fan operation mode

1. Press the "ON/OFF" button, the air conditioner starts to operate.
2. Press the "MODE" button, select fan operation mode.
3. By pressing the "SPEED" button, you can select fan speed from Low, Mid, High.
4. Press the "ON/OFF" button again, the air conditioner stops.

Note: In the fan mode, the temperature settings is non-effective.

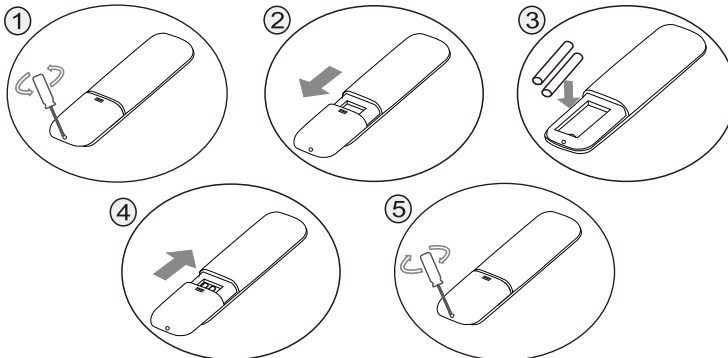
★ Dry operation mode

1. Press the "ON/OFF" button, the air conditioner starts to operate.
2. Press the "MODE" button, select dry operation mode.
3. By pressing the "+" or "-" button, you can set temperature from 16°C (60°F) to 32°C (90°F), the display changes as you press the button.
4. Press the "ON/OFF" button again, the air conditioner stops.

Note: In the dry mode, the speed settings is non-effective.

Usage

★ Fix batteries



1. Remove the screw on the back of the remote controller.
2. Slide to open the battery cover according to the direction indicated by the arrowhead.
3. Insert two brand new batteries (7#), and position the batteries to the right electric poles (+ & -).
4. Put back the battery cover.
5. Tighten the screw on the back of the remote controller.

Note: Some battery cover doesn't have the screw, the actual unit shall prevail.